

Our Vision is a world where children and young people feel valued and supported.

Our aim

To provide long term dedicated social and emotional support to vulnerable or distressed children and young people. Our Mission is to provide dedicated support to children and young people who need it.

Supporting your child

Parents and families can refer their children to Mentor Link by contacting us by telephone or email. (Details on the back of the leaflet) Our staff will discuss our service with you in more detail.

Mentor link has an excellent reputation of supporting children and young people who may be experiencing difficult times for example:

- Family breakdown or crisis
- Bullying
- Low self-esteem
- Friendship or relationship issues
- Self-harm
- Poor behaviour at school or low attendance
- Disengagement from school, family or friends
- Anxiety
- Traumatic loss or bereavement
- Additional or special needs



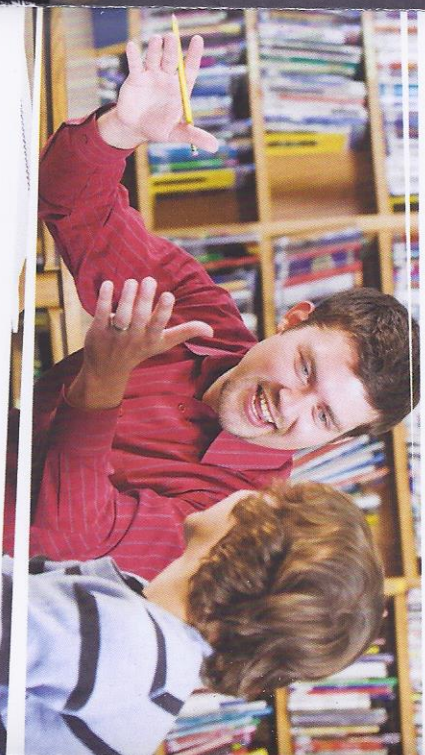
One young person writes...

"I've realised that I can help myself because now I am top of the school and I needed to change my behaviour. I've enjoyed having someone to talk to and have fun with. I am amazing now!!"

Parents write...

"I'm so grateful to Kim and this service. My daughter looks forward to her sessions. It has helped with expressing her feelings and dealing with emotions since her father and I separated earlier this year."

"He is very settled at school, never wants a day off whereby at his previous school he would do anything for a day off!"

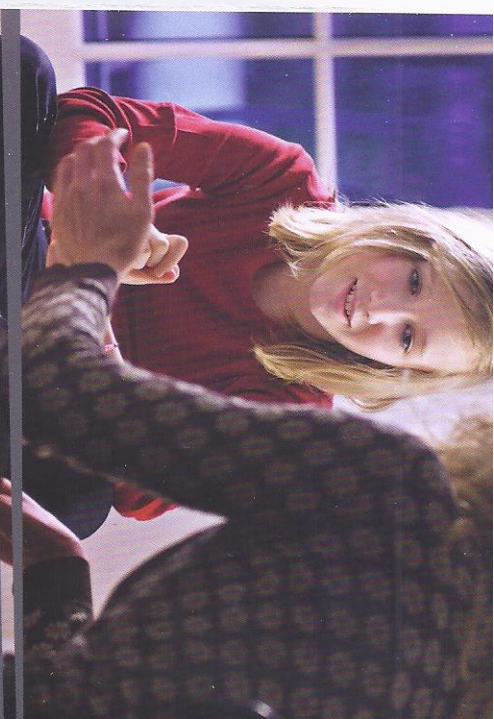


Our service improves

- Self esteem
- Performance and behaviour at school
- Relationships with family and friends
- Attendance and engagement in learning

Last year we mentored 359 children and young people

- 88% were reported as improved self-esteem
- 66% improved in performance and behaviour at school
- 84% reported improved relationships
- 71% reported improved wellbeing



What do we do

We are a children's charity providing long term one to one support to children and young people from a professionally trained mentor or counsellor.

Our services is

- Child and young person centred
- Weekly
- Long term
- Dedicated
- Confidential
- Professional

Our mentors and counsellors are

- Professionally recruited using safer recruiting techniques
- Carefully matched to the child or young person
- Independent
- Fully trained to listen to children and young people
- DBS vetted
- Supported by our staff in their role
- Male and female mentors

Mentor Link welcomes enquiries from parents and our staff can discuss with you the service that we provide and how we can support your child.